

GENERAL NOTES:		ENERGY EFFICIENCY		BUILDING PERMIT APPROVAL		
<div>FIRE SERVICES NOTES &amp; LEGEND</div> <div><div><div>1.</div><div>ALL FIRE SERVICE TO COMPLY WITH BCA PART E1.4</div></div><div><div>2.</div><div>THE SIZE TYPE AND LOCATION OF FIRE EXTINGUISHERS SHALL BE IN ACCORDANCE WITH THE APPROVED PLAN TO THE SATISFACTION OF THE CHIEF FIRE OFFICER.</div></div><div><div>3.</div><div>ALL WORKS SHALL BE CARRIED OUT IN ACCORDANCE WITH (A) MPDWB WATER SUPPLY BY-LAWS (B) C.F.A. FIRE SERVICE REQUIREMENTS (C) VICTORIAN BUILDING REGULATIONS</div></div><div><div>4.</div><div>ALL FIRE SERVICE PIPES ARE TO BE COPPER TUBE TO A.S. 1482</div></div><div><div>5.</div><div>CONNECT COPPER PIPES TO VALVES WITH COPPER/ALLOY FITTINGS TO A.S. 1590</div></div><div><div>6.</div><div>PROVIDE 750mm COVER TO ALL PIPES UNDER PAVEMENT</div></div><div><div>7.</div><div>PROVIDE AND MAINTAIN AN ESSENTIAL SERVICES LOG BOOK IN METER BOX OR AT SWITCHBOARD IN KEEPING WITH BUILDING REGULATIONS 2006 PART 12</div></div><div><div>8.</div><div>PROVISION OF FIRE PRECAUTIONS DURING CONSTRUCTION IN BUILDINGS NOT GREATER THAN 12m IN HEIGHT NOT LESS THAN 1 FIRE EXTINGUISHER TO SUIT CLASS A.B. &amp; C. FIRES &amp; ELECTRICAL FIRES TO PROVIDE AT ALL TIMES ON EACH STOREY ADJACENT TO EACH REQUIRED EXIT OR TEMPORARY STAIRWAY OR EXIT. E1.9 (a)</div></div></div> <div><div><div><div><div></div></div></div><div>2A 80B(E) DRY CHEMICAL</div></div><div><div><div></div></div></div><div>3A. AIR/WATER 9 LITRE</div></div> <div><div><div></div></div></div> <div>4A80B(E) DRY CHEMICAL</div> <div><div><div></div></div></div> <div>EXTINGUISHERS TO BE HUNG ON SUITABLE HOOKS PORTABLE FIRE EXTINGUISERS TO COMPLY WITH AS2444</div> <div><div><div></div></div></div> <div>HYDRANT</div> <div><div><div></div></div></div> <div>36.00m HOSE AND REEL IN ACCORDANCE WITH A.S. 2441 REFER TO FIRE SERVICE DESIGN</div> <div><div></div><div>TOP OF EXTINGUISHER TO BE 1.20 MAX. ABOVE F.L. WITH SIGNAGE AT 2.00m ABOVE F.L.</div></div> <div>ELECTRICAL LEGEND</div> <div><div><div></div></div><div>MAIN ELECTRICAL SWITCHBOARD. LOCATED IN THE PATH OF TRAVEL TO EXITS ENCLOSED IN METAL OR NON COMBUSTIBLE CABINET WITH SMOKE PROOF DOORS</div></div> <div><div><div></div></div></div> <div>SUPPLY AUTHORITY METERS TO BE INSTALLED BY A QUALIFIED ELECTRICIAN AND APPROVED BY RELEVANT AUTHORITY WITH ACCESS FROM COMMON PROPERTY. LOCATION TO BE CONFIRMED</div> <div><div><div></div></div></div> <div>EMERGENCY EXIT LIGHTS</div> <div><div><div></div></div></div> <div>CLEVERFIT EXIT RANGE</div> <div><div><div></div></div></div> <div>MOUNT HEIGHT = 2400</div> <div><div><div></div></div></div> <div>DCFLED</div> <div><div><div></div></div></div> <div>C0 E1.6</div> <div><div><div></div></div></div> <div>C90 E1.6</div> <div><div><div></div></div></div> <div>EMERGENCY LIGHT (STARLITE)</div> <div><div><div></div></div></div> <div>MOUNT HEIGHT = 2700</div> <div><div><div></div></div></div> <div>DSL10-LH</div> <div><div><div></div></div></div> <div>C0 D20 - C90 D20</div> <div>EXIT SIGNS &amp; EMERGENCY LIGHTING TO COMPLY WITH AS2293</div> <div>DOOR SCHEDULE</div> <div><div><div></div></div></div> <div>ALL DOOR FURNITURE TO BE "D" TYPE LEVER HANDLES REFER TO EXIT DOOR NOTE ON PLAN</div> <div><div><div></div></div></div> <div>COLOUR CONTRAST DOOR FRAMES AND HANDRAILS</div> <div><div><div></div></div></div> <div>PROVIDE SELF-CLOSING DOORS TO AIR-LOCKS &amp; ANY FIRE DOOR</div> <div><div><div></div></div></div> <div>ALL DOORS IN A REQUIRED EXIT OR PATH OF TRAVEL TO AN EXIT IS REQUIRED TO HAVE AN UNOBSTRUCTED HEIGHT OF 2m</div> <div><div><div></div></div></div> <div>400 X 400 ALUMINIUM DOOR RELIEF GRILLS</div> <div><div><div></div></div></div> <div>ALTERNATIVELY ADOPT 25MM GAP UNDER DOORS TO PROVIDE RELIEF AS REQUIRED TO BUILDERS DISCRETION</div> <div>DISABLED PERSON FACILITIES</div> <div><div><div></div></div></div> <div>PROVIDE WALKWAY GRADE 1:20 FOR DISABLED PERSONS ACCESS FROM DESIGNATED CARPARKING SPACE LANDING AT FRONT ENTRY DOOR MAX. GRADE 1:40</div> <div><div><div></div></div></div> <div>PROVIDE SYMBOL FOR DISABLED AT ACCESS ADJACENT TO RELEVANT DOORS AS SPECIFIED TO A.S. 1428.1</div> <div>ALL DIMENSIONS &amp; LEVELS TO BE CHECKED &amp; VERIFIED ON SITE BY BUILDER PRIOR TO COMMENCEMENT OF WORKS</div>		<div><div><div><div></div><div></div></div><div>20 MIN</div></div><div><div><div></div><div></div></div><div>35 to 45 mm</div></div></div> <div>DOOR HARDWARE</div> <div>FOR HINGED DOORS</div> <div>ALL DOOR FURNITURE TO BE "D" TYPE LEVER HANDLES</div> <div><div><div></div><div></div></div><div>850 MIN.</div></div> <div>CLEAR OPENING</div> <div><div><div></div><div></div></div><div>FACE OF DOOR</div></div> <div>SWING DOOR</div> <div>CIRCULATION SPACE SHALL BE PROVIDED ON A CONTINUOUS ACCESSIBLE PATH OF TRAVEL</div>				
				CLIENT APPROVAL/SIGNATURE		

PROJECT: PROPOSED PORTABLE BUILDING		<div><div><div></div><div></div></div><div>Portable Buildings</div><div>by Design</div></div> <div><div><div></div><div></div></div><div>CLUB</div><div>One Team One Dream</div></div>	<div><div><div></div><div></div></div><div>Design and Drafting</div><div><div><div></div><div></div></div><div>TERNEL</div><div><div><div></div><div></div></div><div>Design and Drafting</div><div><div><div></div><div></div></div><div>TERNEL</div><div><div><div></div><div></div></div><div>Design and Drafting</div><div><div><div></div><div></div></div><div>TERNEL</div><div><div><div></div><div></div></div><div>Design and Drafting</div><div><div><div></div><div></div></div><div>TERNEL</div><div><div><div></div><div></div></div><div>Design and Drafting</div><div><div><div></div><div></div></div><div>TERNEL</div><div><div><div></div><div></div></div><div>Design and Drafting</div><div><div><div></div><div></div></div><div>TERNEL</div><div><div><div></div><div></div></div><div>Design and Drafting</div><div><div><div></div><div></div></div><div>TERNEL</div><div><div><div></div><div></div></div><div>Design and Drafting</div><div><div><div></div><div></div></div><div>TERNEL</div><div><div><div></div><div></div></div><div>Design and Drafting</div><div><div><div></div><div></div></div><div>TERNEL</div><div><div><div></div><div></div></div><div>Design and Drafting</div><div><div><div></div><div></div></div><div>TERNEL</div><div><div><div></div><div></div></div><div>Design and Drafting</div><div><div><div></div><div></div></div><div>TERNEL</div><div><div><div></div><div></div></div><div>Design and Drafting</div><div><div><div></div><div></div></div><div>TERNEL</div><div><div><div></div><div></div></div><div>Design and Drafting</div><div><div><div></div><div></div></div><div>TERNEL</div><div><div><div></div><div></div></div><div>Design and Drafting</div><div><div><div></div><div></div></div><div>TERNEL</div><div><div><div></div><div></div></div><div>Design and Drafting</div><div><div><div></div><div></div></div><div>TERNEL</div><div><div><div></div><div></div></div><div>Design and Drafting</div><div><div><div></div><div></div></div><div>TERNEL</div><div><div><div></div><div></div></div><div>Design and Drafting</div><div><div><div></div><div></div></div><div>TERNEL</div><div><div><div></div><div></div></div><div>Design and Drafting</div><div><div><div></div><div></div></div><div>TERNEL</div><div><div><div></div><div></div></div><div>Design and Drafting</div><div><div><div></div><div></div></div><div>TERNEL</div><div><div><div></div><div></div></div><div>Design and Drafting</div><div><div><div></div><div></div></div><div>TERNEL</div><div><div><div></div><div></div></div><div>Design and Drafting</div><div><div><div></div><div></div></div><div>TERNEL</div><div><div><div></div><div></div></div><div>Design and Drafting</div><div><div><div></div><div></div></div><div>TERNEL</div><div><div><div></div><div></div></div><div>Design and Drafting</div><div><div><div></div><div></div></div><div>TERNEL</div><div><div><div></div><div></div></div><div>Design and Drafting</div><div><div><div></div><div></div></div><div>TERNEL</div><div><div><div></div><div></div></div><div>Design and Drafting</div><div><div><div></div><div></div></div><div>TERNEL</div><div><div><div></div><div></div></div><div>Design and Drafting</div><div><div><div></div><div></div></div><div>TERNEL</div><div><div><div></div><div></div></div><div>Design and Drafting</div><div><div><div></div><div></div></div><div>TERNEL</div><div><div><div></div><div></div></div><div>Design and Drafting</div><div><div><div></div><div></div></div><div>TERNEL</div><div><div><div></div><div></div></div><div>Design and Drafting</div><div><div><div></div><div></div></div><div>TERNEL</div><div><div><div></div><div></div></div><div>Design and Drafting</div><div><div><div></div><div></div></div><div>TERNEL</div><div><div><div></div><div></div></div><div>Design and Drafting</div><div><div><div></div><div></div></div><div>TERNEL</div><div><div><div></div><div></div></div><div>Design and Drafting</div><div><div><div></div><div></div></div><div>TERNEL</div><div><div><div></div><div></div></div><div>Design and Drafting</div><div><div><div></div><div></div></div><div>TERNEL</div><div><div><div></div><div></div></div><div>Design and Drafting</div><div><div><div></div><div></div></div><div>TERNEL</div><div><div><div></div><div></div></div><div>Design and Drafting</div><div><div><div></div><div></div></div><div>TERNEL</div><div><div><div></div><div></div></div><div>Design and Drafting</div><div><div><div></div><div></div></div><div>TERNEL</div><div><div><div></div><div></div></div><div>Design and Drafting</div><div><div><div></div><div></div></div><div>TERNEL</div><div><div><div></div><div></div></div><div>Design and Drafting</div><div><div><div></div><div></div></div><div>TERNEL</div><div><div><div></div><div></div></div><div>Design and Drafting</div><div><div><div></div><div></div></div><div>TERNEL</div><div><div><div></div><div></div></div><div>Design and Drafting</div><div><div><div></div><div></div></div><div>TERNEL</div><div><div><div></div><div></div></div><div>Design and Drafting</div><div><div><div></div><div></div></div><div>TERNEL</div><div><div><div></div><div></div></div><div>Design and Drafting</div><div><div><div></div><div></div></div><div>TERNEL</div><div><div><div></div><div></div></div><div>Design and Drafting</div><div><div><div></div><div></div></div><div>TERNEL</div><div><div><div></div><div></div></div><div>Design and Drafting</div><div><div><div></div><div></div></div><div>TERNEL</div><div><div><div></div><div></div></div><div>Design and Drafting</div><div><div><div></div><div></div></div><div>TERNEL</div><div><div><div></div><div></div></div><div>Design and Drafting</div><div><div><div></div><div></div></div><div>TERNEL</div><div><div><div></div><div></div></div><div>Design and Drafting</div><div><div><div></div><div></div></div><div>TERNEL</div><div><div><div></div><div></div></div><div>Design and Drafting</div><div><div><div></div><div></div></div><div>TERNEL</div><div><div><div></div><div></div></div><div>Design and Drafting</div><div><div><div></div><div></div></div><div>TERNEL</div><div><div><div></div><div></div></div><div>Design and Drafting</div><div><div><div></div><div></div></div><div>TERNEL</div><div><div><div></div><div></div></div><div>Design and Drafting</div><div><div><div></div><div></div></div><div>TERNEL</div><div><div><div></div><div></div></div><div>Design and Drafting</div><div><div><div></div><div></div></div><div>TERNEL</div><div><div><div></div><div></div></div><div>Design and Drafting</div><div><div><div></div><div></div></div><div>TERNEL</div><div><div><div></div><div></div></div><div>Design and Drafting</div><div><div><div></div><div></div></div><div>TERNEL</div><div><div><div></div><div></div></div><div>Design and Drafting</div><div><div><div></div><div></div></div><div>TERNEL</div><div><div><div></div><div></div></div><div>Design and Drafting</div><div><div><div></div><div></div></div><div>TERNEL</div><div><div><div></div><div></div></div><div>Design and Drafting</div><div><div><div></div><div></div></div><div>TERNEL</div><div><div><div></div><div></div></div><div>Design and Drafting</div><div><div><div></div><div></div></div><div>TERNEL</div><div><div><div></div><div></div></div><div>Design and Drafting</div><div><div><div></div><div></div></div><div>TERNEL</div><div><div><div></div><div></div></div><div>Design and Drafting</div><div><div><div></div><div></div></div><div>TERNEL</div><div><div><div></div><div></div></div><div>Design and Drafting</div><div><div><div></div><div></div></div><div>TERNEL</div><div><div><div></div><div></div></div><div>Design and Drafting</div><div><div><div></div><div></div></div><div>TERNEL</div><div><div><div></div><div></div></div><div>Design and Drafting</div><div><div><div></div><div></div></div><div>TERNEL</div><div><div><div></div><div></div></div><div>Design and Drafting</div><div><div><div></div><div></div></div><div>TERNEL</div><div><div><div></div><div></div></div><div>Design and Drafting</div><div><div><div></div><div></div></div><div>TERNEL</div><div><div><div></div><div></div></div><div>Design and Drafting</div><div><div><div></div><div></div></div><div>TERNEL</div><div><div><div></div><div></div></div><div>Design and Drafting</div><div><div><div></div><div></div></div><div>TERNEL</div><div><div><div></div><div></div></div><div>Design and Drafting</div><div><div><div></div><div></div></div><div>TERNEL</div><div><div><div></div><div></div></div><div>Design and Drafting</div><div><div><div></div><div></div></div><div>TERNEL</div><div><div><div></div><div></div></div><div>Design and Drafting</div><div><div><div></div><div></div></div><div>TERNEL</div><div><div><div></div><div></div></div><div>Design and Drafting</div><div><div><div></div><div></div></div><div>TERNEL</div><div><div><div></div><div></div></div><div>Design and Drafting</div><div><div><div></div><div></div></div><div>TERNEL</div><div><div><div></div><div></div></div><div>Design and Drafting</div><div><div><div></div><div></div></div><div>TERNEL</div><div><div><div></div><div></div></div><div>Design and Drafting</div><div><div><div></div><div></div></div><div>TERNEL</div><div><div><div></div><div></div></div><div>Design and Drafting</div><div><div><div></div><div></div></div><div>TERNEL</div><div><div><div></div><div></div></div><div>Design and Drafting</div><div><div><div></div><div></div></div><div>TERNEL</div><div><div><div></div>&lt;</div></div></div></div></div></div></div></div></div></div></div></div></div></div></div></div></div></div></div></div></div></div></div></div></div></div></div></div></div></div></div></div></div></div></div></div></div></div></div></div></div></div></div></div></div></div></div></div></div></div></div></div></div></div></div></div></div></div></div></div></div></div></div></div></div></div></div></div></div></div></div></div></div></div></div></div></div></div></div></div></div></div></div></div></div></div></div></div></div></div></div></div></div></div></div></div></div></div></div></div></div></div></div></div></div></div></div></div></div></div></div></div></div></div></div></div></div></div></div></div></div></div></div></div></div></div></div></div></div></div></div></div></div></div></div></div></div></div></div></div></div></div></div></div></div></div></div></div></div></div></div></div></div></div>
-------------------------------------	--	--	---

REFER TO GENERAL NOTES FOR ALL STAIR, HANDRAIL & BALLUSTRADE DETAILS

WC NOTE: WC DOORS TO OPEN OUT OR TO HAVE REMOVABLE HINGES

WINDOW SIZES ARE APPROXIMATE, FOR EXACT SIZES REFER TO MANUFACTURER'S SPECS

MECHANICAL VENT/EXHAUST FAN TO BE DUCTED EXTERNALLY. REFER TO GENERAL NOTES

SMOKE ALARMS/DETECTOR TO BE HARDWIRED AND INTERCONNECTED WITH BATTERY BACK UP IN ACCORDANCE WITH AS 3786

ALL WET AREA TO BE WATERPROOFED WITH LIQUID MEMBRANE SIKA AQUA BLOK WPU IN ACCORDANCE WITH AS3740. REFER TO DETAIL

PROVIDE VISUAL INDICATORS TO FULL HEIGHT GLAZING AND ENSURE THAT A 20mm WIDE OPAQUE BAND IS PROVIDED FOR THE FULL WIDTH OF THE GLASS

ALL GUTTERS TO HAVE OVERFLOW PROVISION

ALL GLAZING TO BE IN ACCORDANCE WITH AS2047

**FOR ALL STRUCTURAL DETAIL & SPECIFICATION REFER TO ENGINEER'S DRAWINGS**

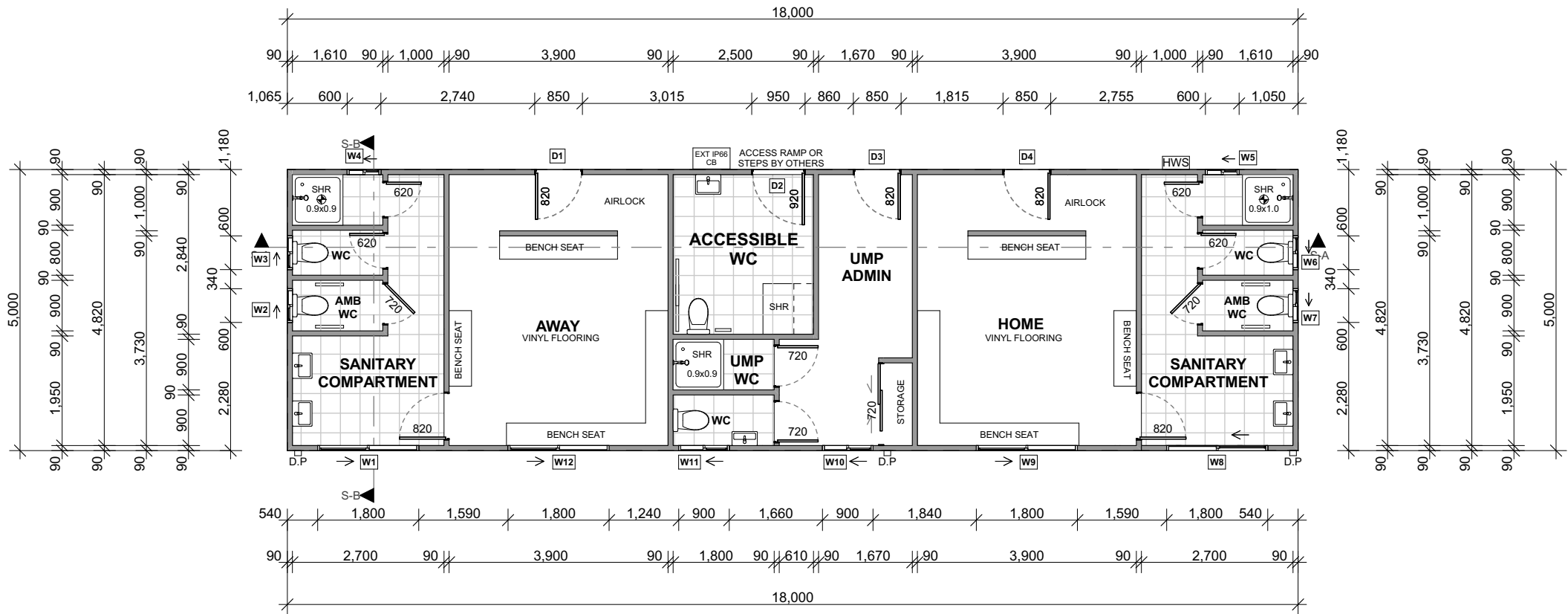
ALL EXPOSED STRUCTURAL STEEL ELEMENTS ARE TO BE GALVANISED

HYBRID "CLIK ON" FLOORING TO BE INSTALLED IN THE DWELLING. REFER TO MANUFACTURER'S DETAIL FOR COLOURS & STYLE

**CORROSION PROTECTION OF BUILT-IN STRUCTURAL MEMBERS**  
PROVIDE CORROSION PROTECTION OF BUILT-IN STRUCTURAL STEEL MEMBERS SUCH AS STEEL LINTELS, SHELF ANGLES, CONNECTORS, ACCESSORIES (OTHER THAN WALL TIES) IN ACCORDANCE WITH TABLE 4.1 OF AS4773.1-2010 MASONRY IN SMALL BUILDINGS, PART 1: DESIGN SUITABLE FOR AN ENVIRONMENT CLASSIFICATION OF T.B.C

**ROOF BLANKET:** FLETCHER INSULATION PERMASTOP R1.3 55MM FOIL FACING  
**EXTERNAL WALL WRAP:** THERMAKRAFT WATERGATE PLUS. COMPLIANT WITH NCC CLAUSE 3.8.7.

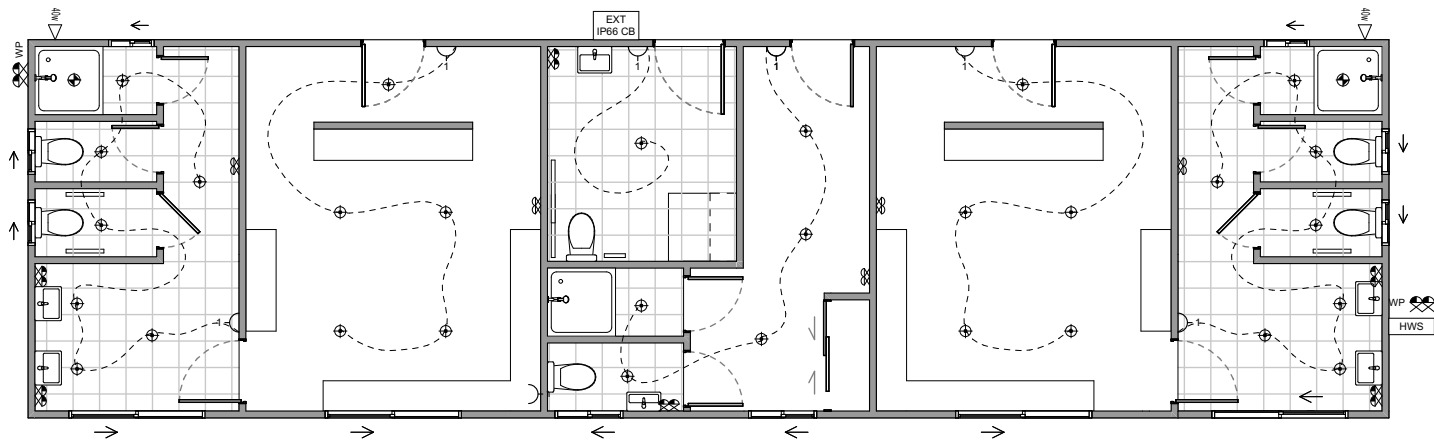
STAIRCASE TO HAVE TREAD SURFACE (DRY) P3 OR R10 OR NOSING STRIP P3  
TO COMPLY WITH AS 4586 & SLIP RESISTANCE CLASSIFICATION AS PER TABLE 3.9.1.3 OF NCC 2019



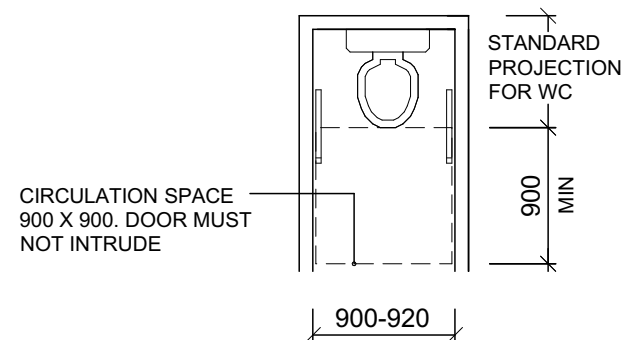
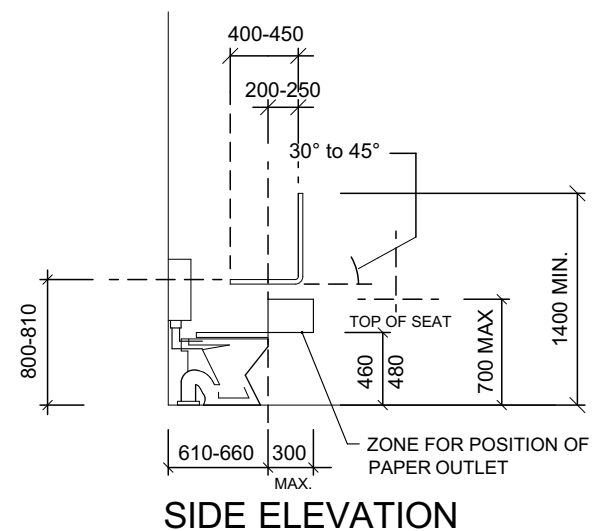
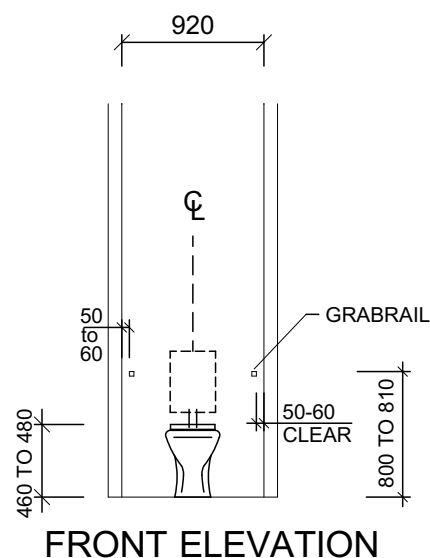
TDD

**FLOOR PLAN**  
1:100

WINDOW SCHEDULE												
WINDOW NUMBER	W1	W2	W3	W4	W5	W6	W7	W8	W9	W10	W11	W12
HEIGHT	600	600	600	600	600	600	600	600	600	600	600	600
WIDTH	1,800	600	600	600	600	600	600	1,800	1,800	900	900	1,800
OPENING TYPE	SLIDING	SLIDING	SLIDING	SLIDING	SLIDING	SLIDING	SLIDING	SLIDING	SLIDING	SLIDING	SLIDING	SLIDING
GLAZING												
ELEVATION												

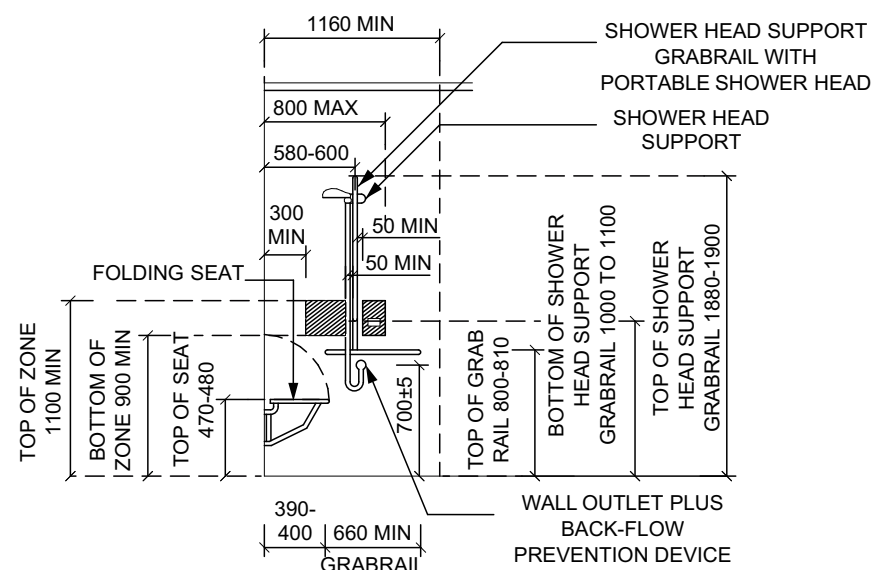
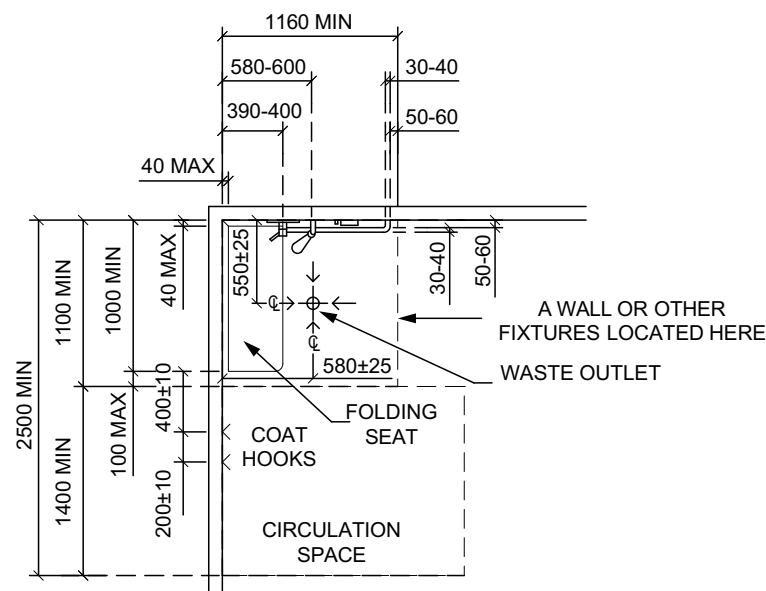


**TDD ELECTRICAL PLAN**  
**1:100**



## SANITARY COMPARTMENT FOR AMBULANT DISABILITIES

DOOR SCHEDULE				
DOOR NUMBER	D1	D2	D3	D4
HEIGHT	2,100	2,100	2,100	2,100
WIDTH	850	950	850	850
DOOR TYPE				
GLAZING				
DOOR ELEVATION				



REFER TO PROJECT SPECIFICATION FOR:

- LIGHT SWITCHES COLOUR AND STYLE
- LIGHT FITTINGS DETAILS
- ELECTRIC/GAS HOT PLATE
- ELECTRIC/GAS UPRIGHT COOKING RANGE
- DISHWASHER PROVISION
- RANGEHOOD
- ELECTRIC/GAS HOT WATER SERVICE

ALTERNATE METER BOX LOCATION TO BE VERIFIED ONSITE TO BUILDERS DISCRETION TO SUIT SITE CONDITIONS & TO MINIMISE P.C. ADJUSTMENT

## ELECTRICAL SCHEDULE

POWER OUTLETS		
	SINGLE GPO - DISHWASHER	0
	DOUBLE GPO - 300mm	5
	DOUBLE GPO - 700mm	6
	DOUBLE GPO - 1100mm	4
	EXTERNAL DOUBLE GPO	2

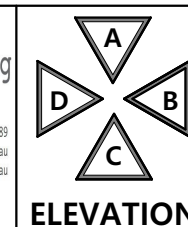
LIGHT FITTINGS		
	LIGHT POINT	30
	WALL LIGHT/FLOOD LIGHT	2
	SMOKE DETECTOR HARDWIRED & INTERCONNECTED	0

OTHER OUTLET		
	SINGLE GANG LIGHT SWITCH	6
	DOUBLE GANG LIGHT SWITCH	0
	TV POINT	0
	CEILING FAN	0
	AIR CONDITIONER	0

PROJECT: **PROPOSED PORTABLE BUILDING**

SITE LOCATION: **DOWN ST, LONGWOOD VIC 3665**

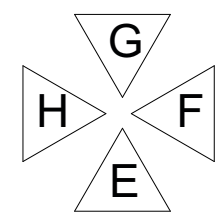
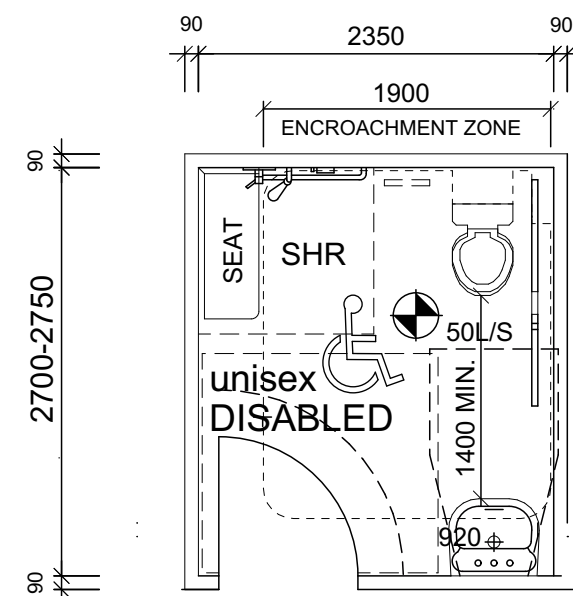
CLIENTS: **LONGWOOD FOOTBALL NETBALL CLUB**



DRAWING TITLE: **WORKING DRAWINGS** SIZE **A3**

DATE: **01/06/23** DRAWN: **MT** B.P.N: **DP-AD 44755**

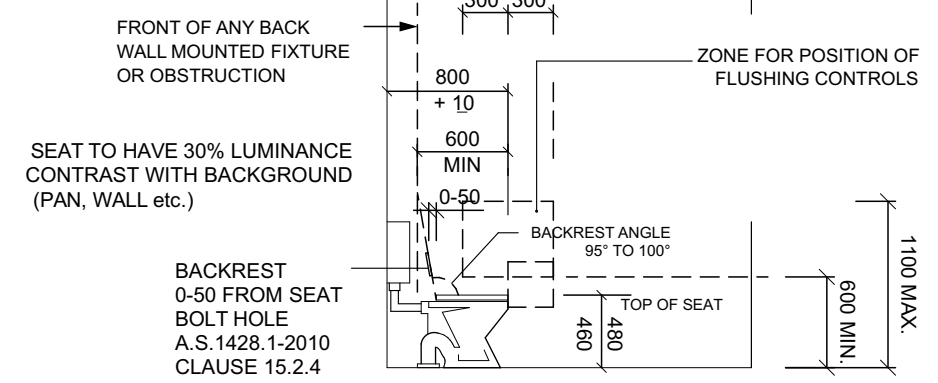
JOB REF: **22-77** ISSUE: **E** SHEET NO: **3**



**TYPICAL  
DISABLED WC PLAN 1:50**  
A.S.1428.1-2009

- DISABLED SIGNAGE**  
TO COMPLY WITH BCA 2016 D3.6  
& A.S. 1428.1 - 8 2009
- BRAILLE & TACTILE SIGNS**
- MUST BE LOCATED NOT LESS THAN 1200 AND NOT HIGHER THAN 1600 ABOVE FLOOR SURFACE.
  - SIGN WITH SINGLE LINE OF CHARACTERS NOT LESS THAN 1250 & NOT HIGHER THAN 1350 ABOVE FLOOR SURFACE
  - SIGNS TO BE LOCATED ON THE LATCH SIDE OF THE DOOR WITH LEADING EDGE OF THE SIGN LOCATED BETWEEN 50 & 300mm FROM THE ARCHITRAVE AND IF NOT POSSIBLE THE SIGN MAY BE PLACED ON THE DOOR

SEAT SHOULD BE FULL-ROUNDED TYPE  
IT SHALL BE SECURELY HINGED TO PAN  
IF LID IS FITTED IT SHOULD BE DESIGNED  
SO THAT IT REMAINS IN THE RAISED POSITION  
WHEN SO PLACED



**WC DETAILS**

**DISABLED TOILET NOTES**

**CLOTHES HANGING DEVICE :** SHALL BE INSTALLED 1200mm TO 1350mm ABOVE THE PLANE OF FFL AND NOT LESS THAN 500mm OUT FROM ANY INTERNAL CORNER A.S.1428.1 - 10.4.4

**MIRRORS:** IF PROVIDED , A VERTICAL MIRROR NOT LESS THAN 350mm WIDE SHALL BE CENTERED OVER THE WASH BASIN AND SHALL EXTEND FROM A HEIGHT OF NOT MORE THAN 900mm TO A HEIGHT OF NOT LESS THAN 1850mm ABOVE THE PLANE OF FFL. A SECOND VERTICAL MIRROR, WHERE PROVIDE SHALL NOT EXTEND FROM A HEIGHT OF NOT LESS THAN 780mm TO A HEIGHT OF NOT LESS THAN 1850mm ABOVE THE PLANE OF THE FFL.

**SOAP DISPENSERS, TOWEL DISPENSERS, HAND DRYERS & SIMILAR FITTINGS:** IF PROVIDED SHALL BE INSTALLED WITH THE HEIGHT OF THEIR OPERATIVE COMPONENT OF OUTLET NOT LESS THAN 900mm & NOT MORE THAN 1100mm ABOVE THE PLANE OF THE FFL. IE. SO THAT THEIR OPERATIVE COMPONENT OR OUTLET IS WITHIN REACH OF THE USER AT THE WASH BASIN.

**SHELVES.** A SHELF MUST BE PROVIDED AND BE SECURELY FIXED WITH THE HEIGHT NOT LESS THAN 900 mm AND NOT MORE THAN 1100mm ABOVE THE PLANE OF THE FINISHED FLOOR.

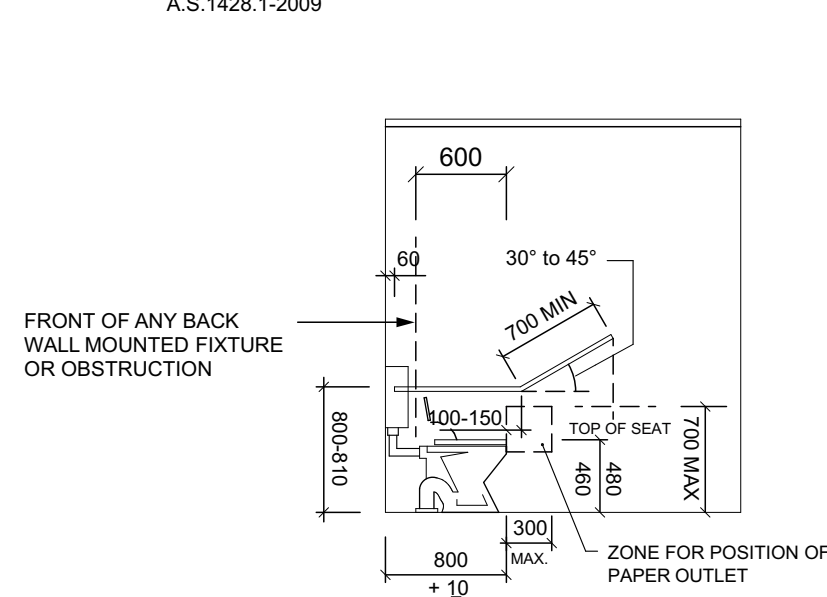
**BRAILLE & TACTILE SIGNAGE**  
IS TO BE PROVIDED THROUGHOUT THE BUILDING  
IN ACCORDANCE WITH BCA 2011 3.6 AND A.S.1428.1 2009  
INCORPORATE THE INTERNATIONAL SYMBOL OF ACCESS OR DEAFNESS AS APPROPRIATE AND IDENTIFY -

**SANITARY FACILITY.**  
SPACE WITH HEARING AUGMENTATION

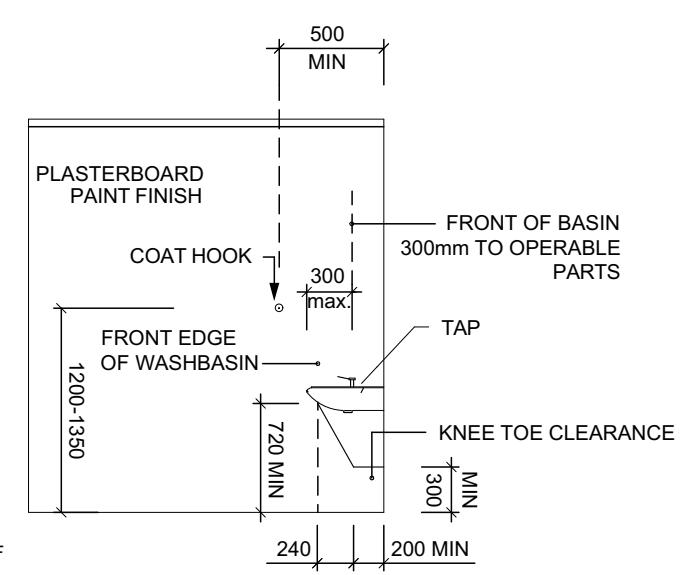
IDENTIFY EACH DOOR WITH AN EXIT SIGN AND STATE  
A) " EXIT "  
B) "LEVEL" FOLLOWED BY THE FLOOR LEVEL NUMBER

SIGNAGE IN ACCORDANCE WITH AS 1428.1 .  
TO BE LOCATED ON THE DOOR.  
MUST BE PROVIDED FOR UNISEX SANITARY FACILITIES TO IDENTIFY IF THE FACILITY IS SUITABLE FOR RIGHT OR LEFT HANDED USE AND IDENTIFY AMBULANT FACILITY.

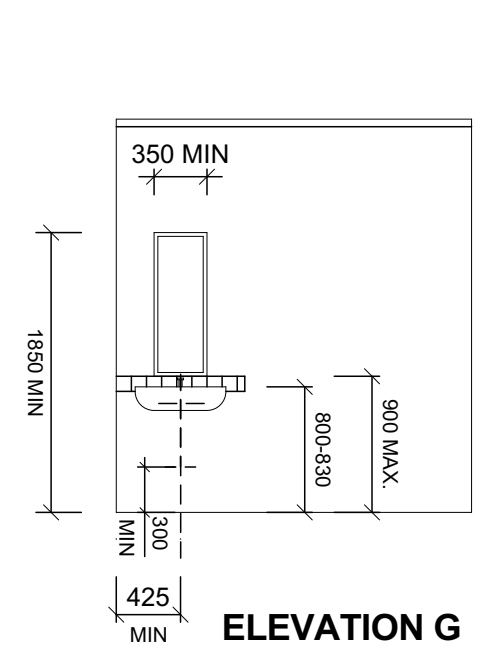
WHERE A PEDESTRIAN ENTRANCE IS NOT ACCESSIBLE OR WHERE A BANK OF SANITARY FACILITIES IS NOT PROVIDED WITH AN ACCESSIBLE UNISEX SANITARY FACILITY, DIRECTIONAL SIGNAGE INCORPORATING THE INTERNATIONAL SYMBOL OF ACCESS AS 1428.1 MUST BE PLACED AT THE LOCATION OF THE FACILITY THAT IS NOT ACCESSIBLE, TO DIRECT A PERSON TO THE NEAREST ACCESSIBLE LOCATION.



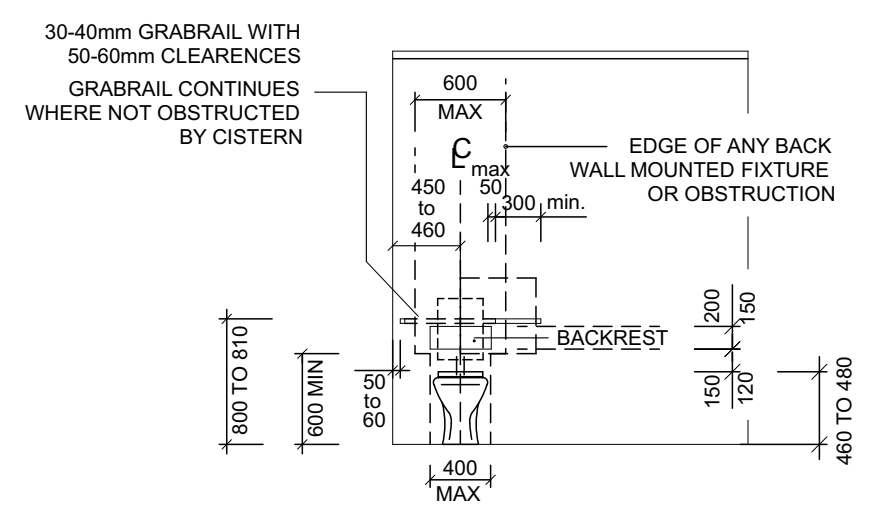
**ELEVATION H**



**ELEVATION F**



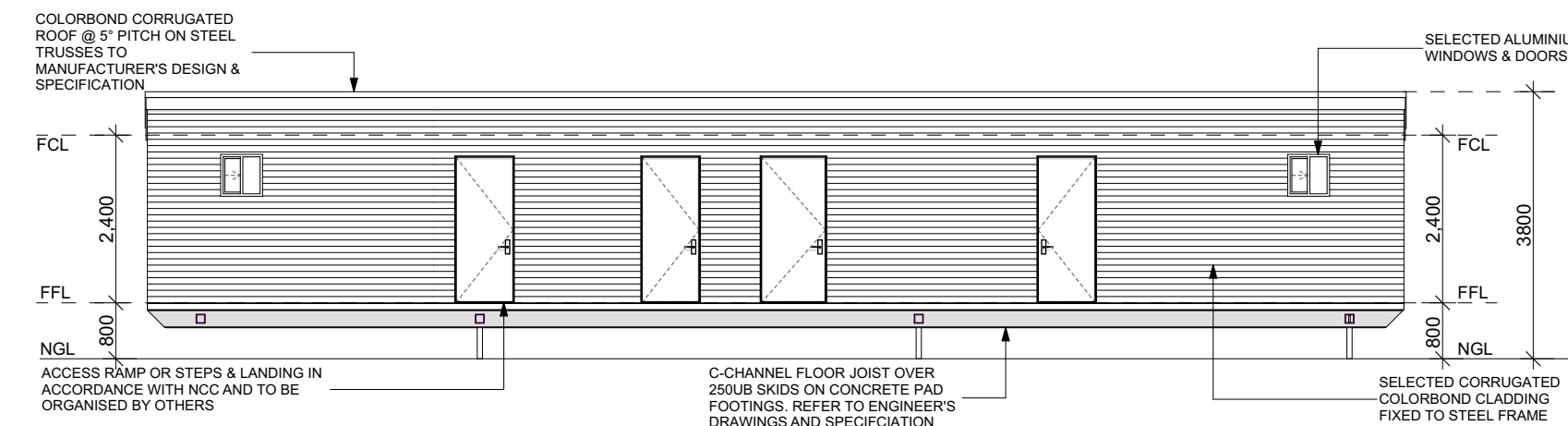
**ELEVATION G**



**ELEVATION E**

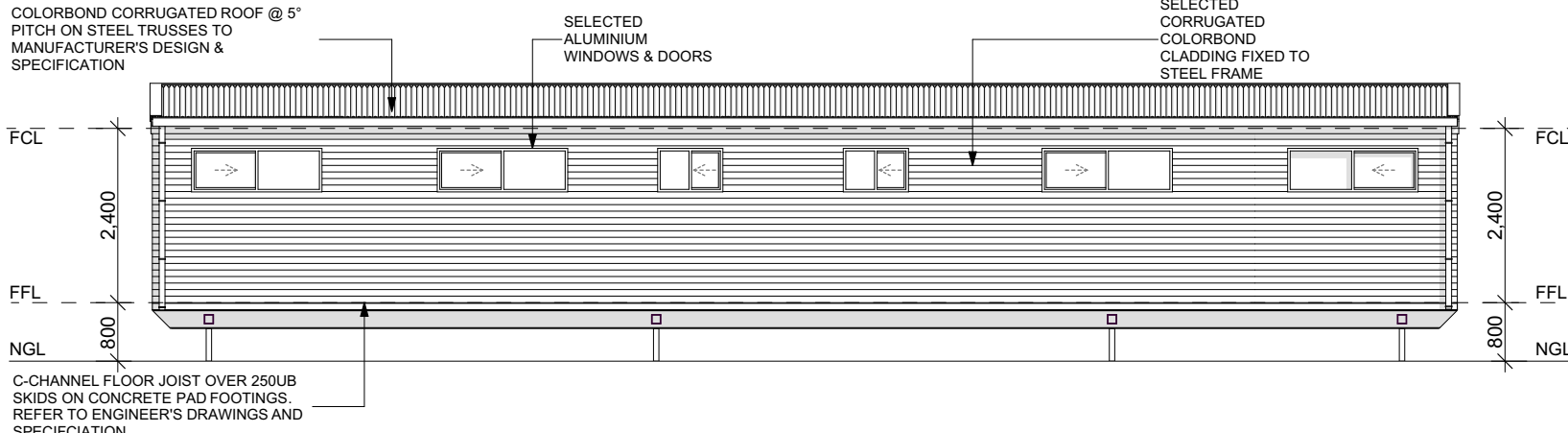
PROJECT: <b>PROPOSED PORTABLE BUILDING</b>		DRAWING TITLE: <b>WORKING DRAWINGS</b>		SIZE <b>A3</b>
SITE LOCATION: <b>DOWN ST, LONGWOOD VIC 3665</b>		DATE: <b>01/06/23</b>	DRAWN: <b>MT</b>	B.P.N: <b>DP-AD 44755</b>
CLIENTS: <b>LONGWOOD FOOTBALL NETBALL CLUB</b>		JOB REF: <b>22-77</b>	ISSUE: <b>E</b>	SHEET NO: <b>4</b>





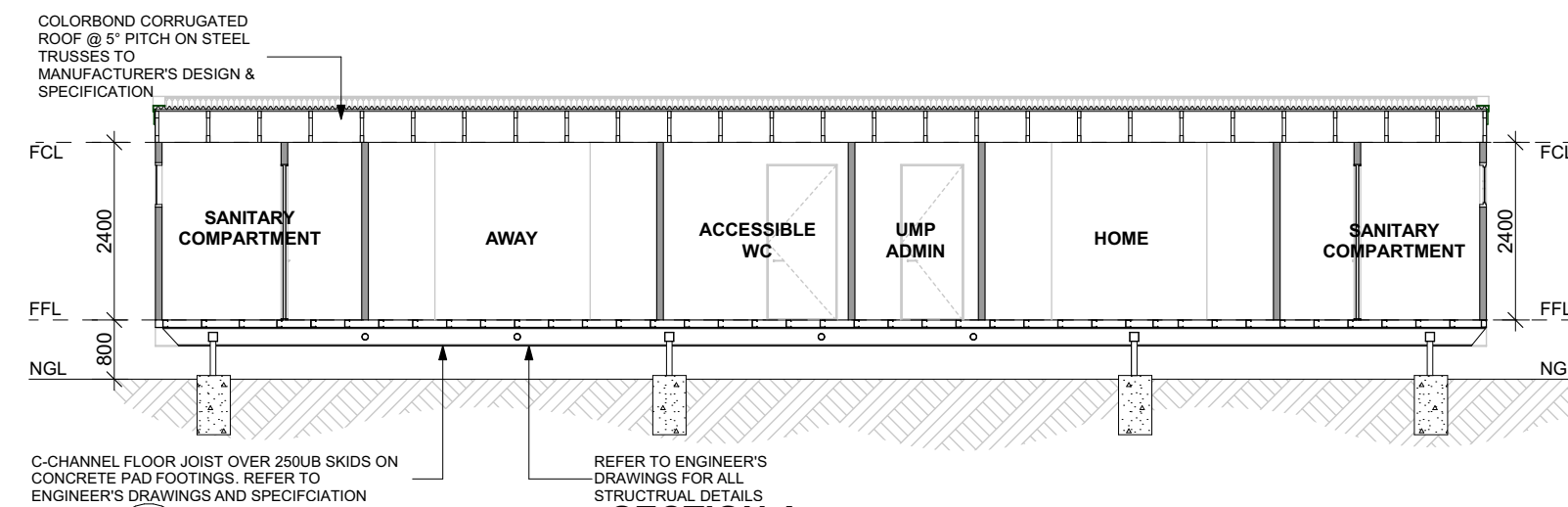
TDD

**ELEVATION (A)**  
1:100



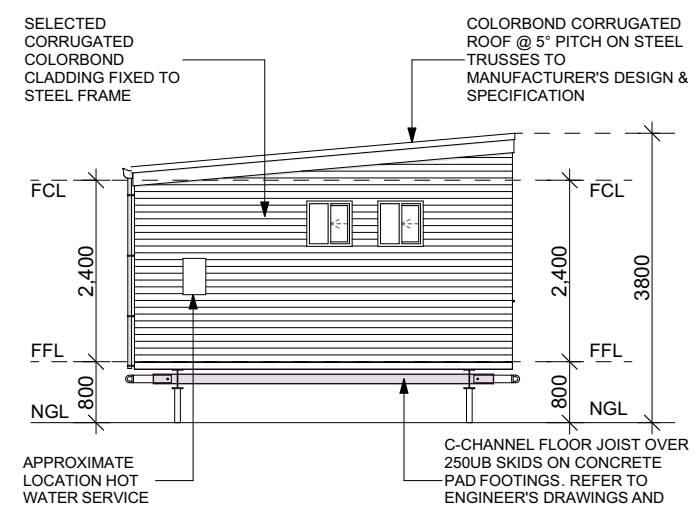
TDD

**ELEVATION (C)**  
1:100



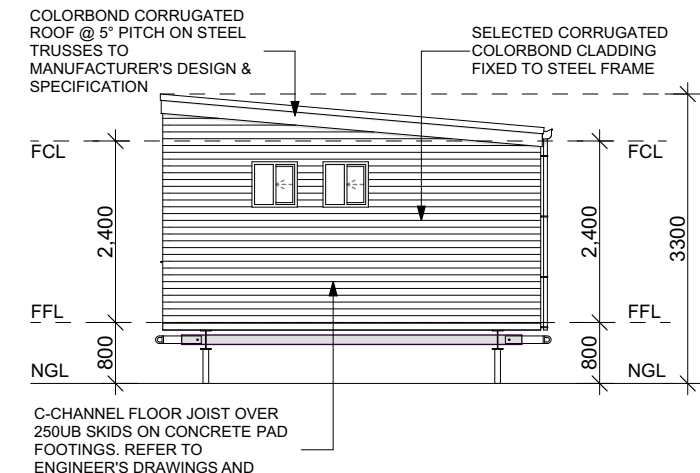
TDD

**SECTION A**  
1:100



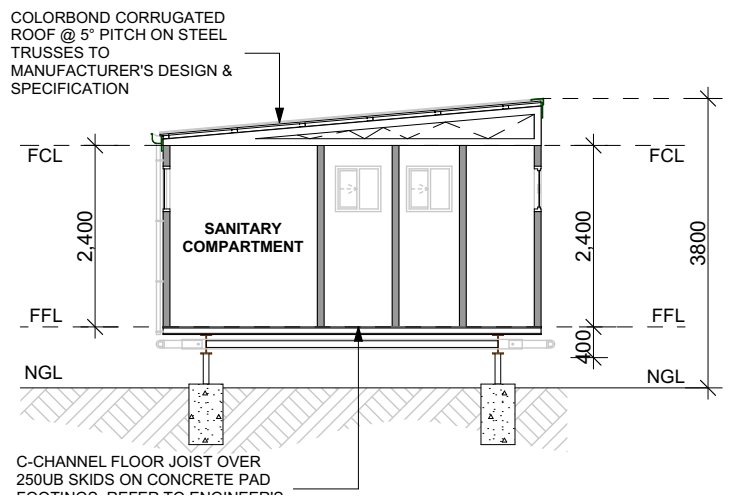
TDD

**ELEVATION (B)**  
1:100



TDD

**ELEVATION (D)**  
1:100



TDD

**SECTION B**  
1:100

## ELEVATION NOTES

- ALL SECOND STOREY EXTERNAL PLUMBING, DRAIN PIPES TO BE CONCEALED.
- LOCALLY FILL AROUND DOORWAYS TO AVOID THE NEED FOR STEPS.
- GRADE SOIL AWAY FROM HOUSE TOWARDS DRAINS.
- EXTENT & NUMBER OF STEPS, LANDINGS & HANDRAILS TO BE DETERMINED ONSITE BY CONTRACT VARIATION AS REQUIRED.
- QUOINING AS DRAWN IS FOR ILLUSTRATION PURPOSES ONLY AND MAY BE VARIED ONSITE TO WORK BRICK BOND. THE BUILDER RESERVES THE RIGHT TO ALTER BRICK QUOINING & BANDS AT HIS SOLE DISCRETION.
- ALL WINDOW SIZES ARE NOMINAL ONLY, HEIGHT & WIDTH DIMENSIONS ARE TO BE CONFIRMED PRIOR TO ORDERING WITH REGARD TO FRAME OPENING SIZES, CLEARANCE FOR WINDOW MOULDINGS, FLASHINGS TO LOWER ROOF ETC.
- ARTICULATION JOINTS ARE TO BE LOCATED IN ACCORDANCE WITH TECHNICAL NOTES, AND TO THE SATISFACTION OF THE GEOTECHNICAL, STRUCTURAL ENGINEER & BUILDING SURVEYOR.
- GARAGE DOORS NOMINAL SIZE. REFER TO SPECIFICATION FOR TYPE & STYLE. GARAGE DOORS SIZES ARE TO BE SITE MEASURED PRIOR TO INSTALLATION. REMOTE CONTROL UNITS U.N.O. ARE TO BE PROVIDED BY CONTRACT VARIATION.
- CEILING HEIGHTS ARE FLOOR TO CEILING FINISHED SURFACES. BUILDERS ARE TO ADJUST WALL HEIGHTS TO ALLOW FOR FLOOR COVERINGS & TOLERANCES.
- DO NOT SCALE OFF DRAWINGS., USE FIGURED DIMENSIONS ONLY. CONTRACTORS SHALL CHECK AND VERIFY ALL LEVELS & DIMENSIONS PRIOR TO COMMENCEMENT OF CONSTRUCTION.
- ALL FINISHED FLOOR & SURFACE LEVELS REFER TO SITE PLAN. ONLY TO BE VARIED AT BUILDERS DISCRETION.
- CAVITY FLASHING & WEEP HOLES ABOVE ALL OPENINGS IN BRICKWORK

## CLIENT APPROVAL/SIGNATURE

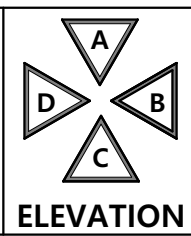
PROJECT: **PROPOSED PORTABLE BUILDING**

SITE LOCATION: **DOWN ST, LONGWOOD VIC 3665**

CLIENTS: **LONGWOOD FOOTBALL NETBALL CLUB**



**Ternel** Design and Drafting  
(n) 0450 987 289  
(e) info@ternelDesign.com.au  
(w) www.ternelDesign.com.au  
TDD is the exclusive owner of this drawing, any infringement may result in legal action



DRAWING TITLE: **WORKING DRAWINGS** SIZE **A3**

DATE: **01/06/23** DRAWN: **MT** B.P.N: **DP-AD 44755**

JOB REF: **22-77** ISSUE: **E** SHEET NO: **5**



WATERPROOFING NOTES

IN ACCORDANCE WITH AS 3740:

PREFORMED SHOWER BASES

INSTALLATION OF PREFORMED SHOWER BASES NEED TO BE ADEQUATELY SUPPORTED TO PREVENT DISTORTION OR CRACKING AND BE SUFFICIENTLY RECESSED INTO THE WALL TO ALLOW THE WATER-RESISTANT SURFACE MATERIALS TO PASS DOWN INSIDE THE PERIMETER REBATE

PERIMETER FLASHING

A JUNCTION WHERE WATERPROOFING TO WATERPROOFING SURFACES MEET , THE WATERPROOFING IS TO BE CONTINUOUS ACROSS THE JUNCTION AND INCORPORATE AN APPROPRIATE BOND BREAKER.WHERE THE PERIMETER FLASHING TO WALL/FLOOR SURFACESTHEY SHOULD BE CONTINUOUSLY SEALED (USUALLY WITH BOND BREAKER), HAVING THE VERTICAL LEG A MINIMUM OF 25MM ABOVE THE FINISHED FLOOR LEVEL (EXCEPT DOORWAYS) AND HORIZONTAL LEG A MINIMUM WIDTH OF 50MM.A WATER STOP WITH A VERTICAL LEG FINISHING FLUSH WITH THE FINISHED FLOOR LEVEL IS TO BE INSTALLED AT FLOOR LEVEL OPENINGS. PROTECTING WATER MIGRATING TO NON-WET AREAS.

VERTICAL FLASHING FOR SHOWER WALL JUNCTIONS

VERTICAL FLASHING CAN BE EXTERNAL OR INTERNAL, WITH A REQUIREMENT TO TERMINATE A MINIMUM OF 1800MM ABOVE THE FINISHED FLOOR LEVEL.

PENETRATIONS IN SHOWER AREAS

TYPICAL PENETRATIONS LIKE TAPS, SHOWER NOZZLES, RECESS SOAP HOLDER ETC. ARE TO BE WATERPROOFED BY SEALING WITH PROPRIETARY FLANGE SYSTEM OR SEALANT  
REQUIRED FLOOR WASTES FOR WET AREA FLOORSWITH A FLOOR WASTE, THE FINISHED FLOOR IS TO BE CONSTRUCTED SO THAT WATER FLOWS TO THE WASTE WITHOUT BEING RETAINED ON THE SURFACE. REFER "FALLS IN FLOOR FINISHES"

VERTICAL MEMBRANE TERMINATION

THE LIQUID APPLIED MEMBRANE IS TO BE APPLIED OVER THE FLOOR SUBSTRATE AND UP THE VERTICAL FACE OF THE WALL:  
•SHOWERS WITH HOBBS AND STEP DOWNS A MINIMUM HEIGHT OF 150MM ABOVE THE FINISHED FLOOR LEVEL  
•HOBLESS SHOWERS, A MINIMUM HEIGHT OF 150MM ABOVE THE FINISHED FLOOR LEVEL

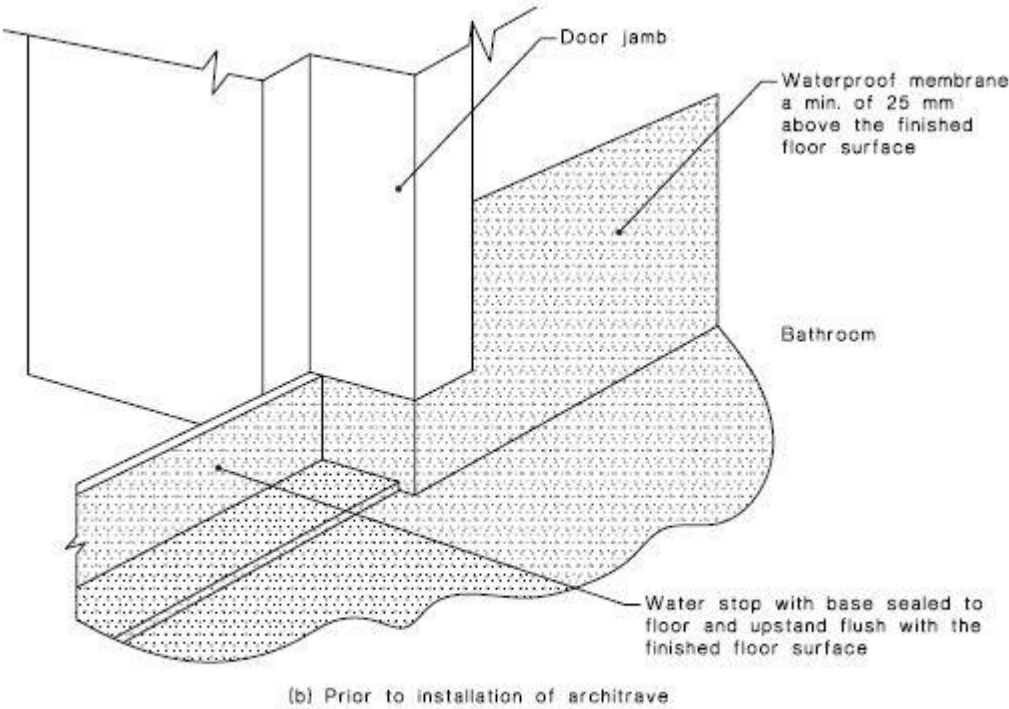
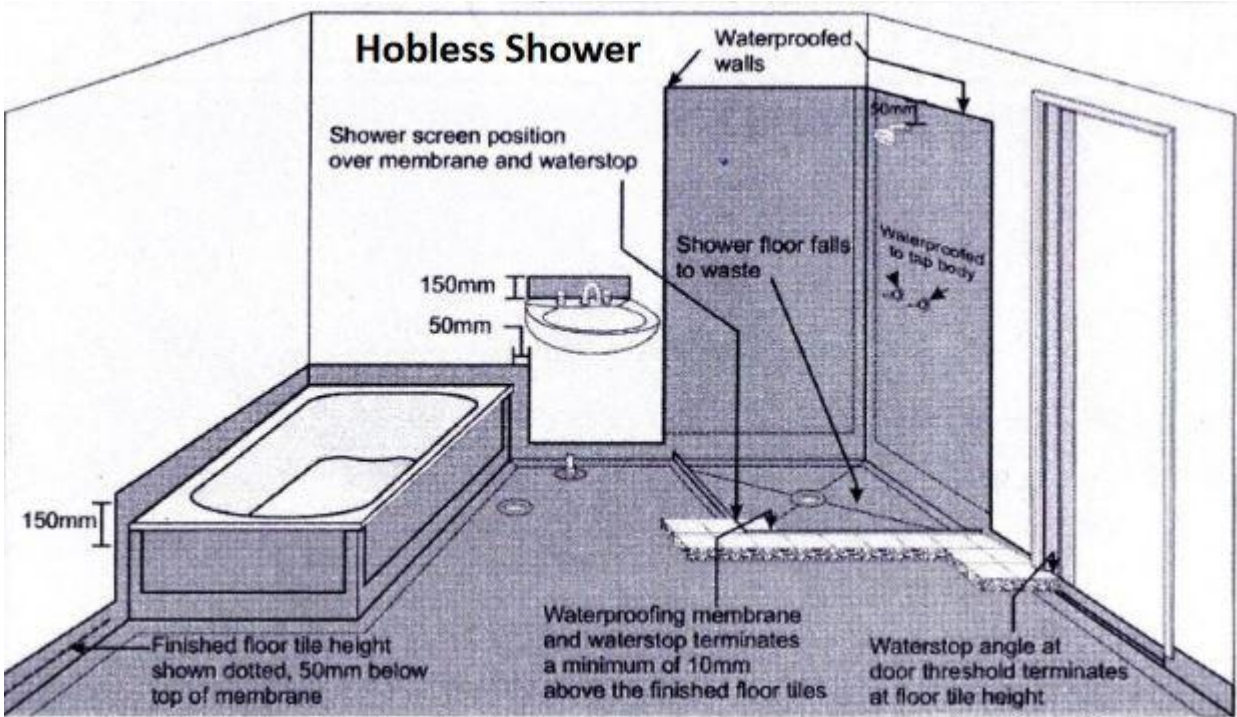
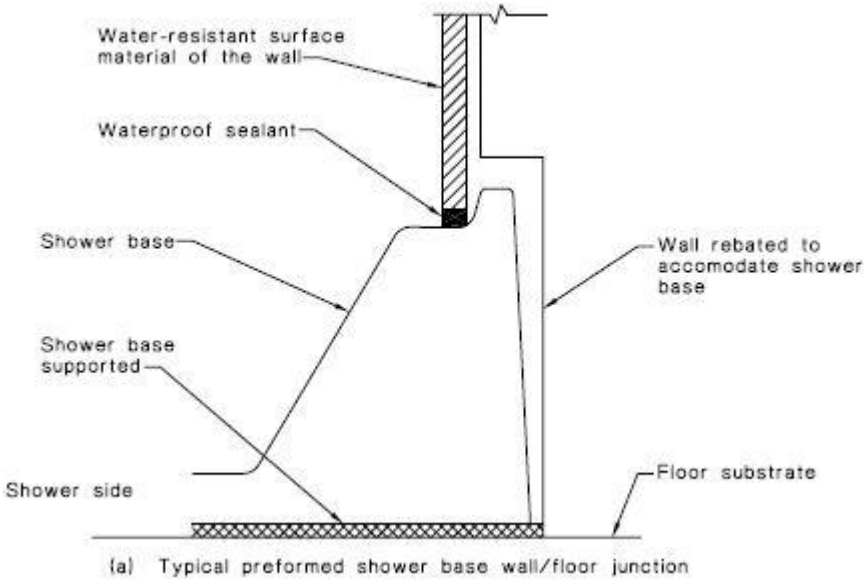
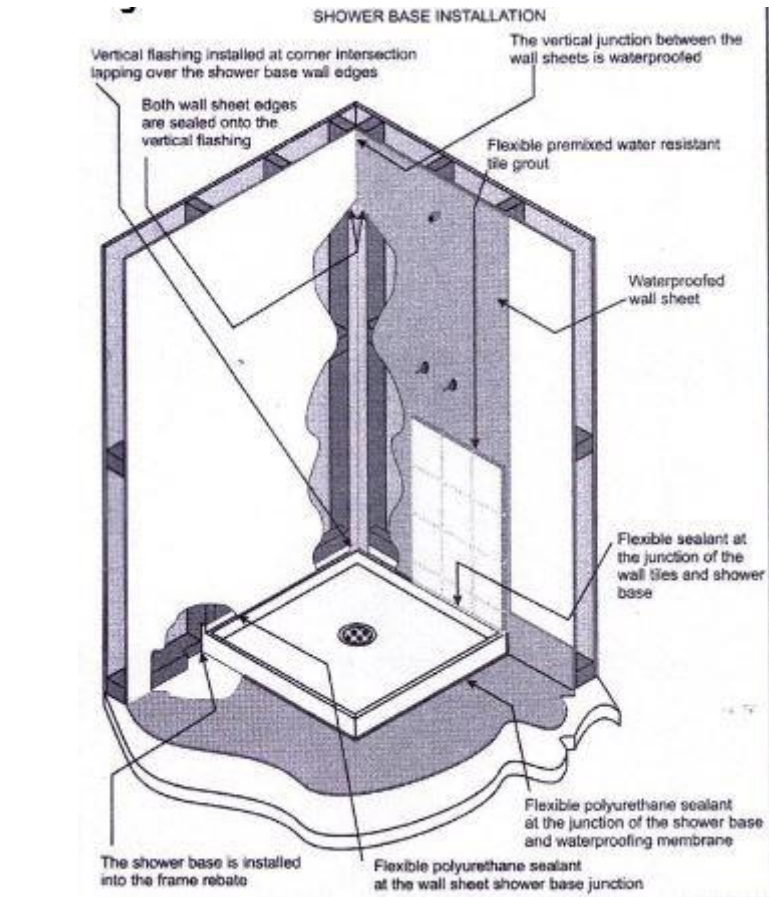
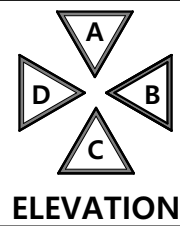


FIGURE 5.3 TYPICAL BATHROOM DOOR DETAIL FOR WHOLE BATHROOM WATERPROOFING

PROJECT:	PROPOSED PORTABLE BUILDING
SITE LOCATION:	DOWN ST, LONGWOOD VIC 3665
CLIENTS:	LONGWOOD FOOTBALL NETBALL CLUB



DRAWING TITLE:	WORKING DRAWINGS	SIZE	A3
DATE:	01/06/23	DRAWN:	MT
JOB REF:	22-77	ISSUE:	E
		SHEET NO:	6





PRODUCT DATA SHEET

# Sika® Aqua Blok® WPU

FIBRE REINFORCED, ONE PART, FLEXIBLE, WATERBASED POLYURETHANE WATERPROOFING

DESCRIPTION

Aqua Blök® WPU is a premixed, single component, waterbased polyurethane waterproofing membrane. Aqua Blök® WPU has High Extensibility and forms an elastomeric, seamless waterproofing membrane for use in internal and external applications for under tiled finishes including shower recesses, bathrooms, laundries, decks, balconies, podiums and rooftops. Aqua Blök® WPU has low VOC's and bonds to a wide variety of substrates. Aqua Blök® WPU contains micro fibre reinforcement for improved tensile strength and crack bridging.

USES

- Concrete
- Sand / cement screeds
- Cement render
- Fibrous cement sheeting
- Structural particle board sheeting
- Compressed fibrous cement sheeting
- Water resistant platerboard
- Structural plywood sheeting

CHARACTERISTICS / ADVANTAGES

- High Extensibility >300%
- Micro fibre enhanced reinforcement
- Internal and external applications
- One part – No mixing, ready to use
- Water based - Low VOC's, Non hazardous
- Compatible with Sika® and CTA® range of tile adhesives

APPLICATION INFORMATION

Consumption	FLOORS: Apply two coats to achieve a minimum dry film thickness of 0.8mm. Application coverage rate of 0.8L/m2 per coat.  WALLS: Apply two coats to achieve a minimum dry film thickness of 0.6mm. Application coverage rate of 0.6L/m2 per coat.  Coverage may vary depending on substrate and application method.
Curing Time	Allow a minimum of 12 hours curing prior to applying finished covering, and a minimum of 5 days to cure before flood testing. Allow longer in adverse weather conditions.
Waiting Time / Overcoating	Allow Aqua Blök® WPU 2-4 hours to dry between coats. Allow longer in adverse weather conditions.

APPLICATION INSTRUCTIONS

SUBSTRATE PREPARATION

All surfaces to be waterproofed must be firm, clean, dry, structurally sound and smooth. All grease, oil, wax, curing compounds, dust, loose material, laitance and other contaminants must be removed. All projections and rough spots should be dressed off to achieve a level surface. The substrate surface must be continuous and not pond water. Porous dry surfaces must be primed using ECO SYSTEMS® Eco Prime WB. Highly porous and dusty substrates must be primed with Aqua Blök® Epoxy Prime 2K, damp green substrates must be primed using SikaTite® Moisture Seal 2K. Dense and impervious substrates must be primed using ECO SYSTEMS® Prep 'N' Prime.

Concrete

Allow at least 28 days for the concrete to cure. Concrete should be left with an open surface – standard wood float or broom finish. All traces of curing compounds or sealers should be removed prior to application. Old concrete must be thoroughly cleaned and washed and allowed to dry. The surface should be even unless falls are incorporated where required, imperfections to be repaired with a suitable Sika® Mono-Top repair mortar.

Sand / Cement Screeds and Renders

The screeds and / or renders must conform to the appropriate standard and should be left with a wood float finish and left to cure for at least cure for 7 days.

Building Boards

Water resistant plasterboard, fibrous cement sheeting, marine ply must be solidly fixed in accordance with the manufacturer's instructions specifically for tiling. The area must be primed with ECO SYSTEMS® Eco Prime WB, particularly where a jointing compound has been used.

Particleboard

Particleboard must be fixed in accordance with the manufacturer's instructions specifically for tiling and free from any movement. Secure floor with additional fixings and wedges, sand any surface contamination after initial preparation. The area must be primed with ECO SYSTEMS® Prep 'N' Prime.

Non Porous Substrates

It may be necessary to mechanically prepare the area. Any existing tiles must be well bonded and be free from any sealers or coatings. Dense, low absorbent and impervious surfaces must be primed with ECO SYSTEMS® Prep 'N' Prime.

Static Crack & Sheet Joint Treatment

For static cracks 0.5 – 3mm wide rout and clean thoroughly before filling with Sika® Neutral Cure silicone to form a Bond Breaker, For all sheet joints and seams clean thoroughly and fill with Sika® Neutral Cure silicone to form a Bond Breaker, apply a liberal coat of Aqua Blök® WPU extending 100mm either side of the crack and place Aqua Blök® reinforcing bandage into the wet membrane, press down firmly to ensure good contact, apply another liberal coat of Aqua Blök® WPU to the entire surface to embed the bandage. For dynamic cracks, expansion joints and control joints contact Sika® technical service for advice.

BOND BREAKER

Aqua Blök® WPU is a Class III membrane with high extensibility and is designed for use with a 12mm Bond Breaker, a bead of Sika® Neutral Cure silicone must tooled off to form a 12mm wide bond breaker. A bond breaker must be installed at areas subject to movement, wall/wall junction, wall/floor junction, sheet joints and seams, penetrations and where there is a change in the direction or substrate type.

TILING

Compatible with a range of Sika® CTA® polymer modified tile adhesives, Contact Sika Technical Service for further advice.

APPLICATION METHOD / TOOLS

Sika® Aqua Blok® WPU may be applied using a brush or roller. The surface must be continuous, Sika® Aqua Blok® WPU cannot span gaps or voids. A minimum of two coats is recommended, each coat must be applied in a perpendicular direction to the previous coat. The application must conform to Australian Standards and relevant local building codes. Ensure there are no defects or damage to the waterproofing membrane, if necessary repair and rectify by applying a third coat.

PROJECT: <b>PROPOSED PORTABLE BUILDING</b>		DRAWING TITLE: <b>WORKING DRAWINGS</b>		SIZE <b>A3</b>
SITE LOCATION: <b>DOWN ST, LONGWOOD VIC 3665</b>		DATE: <b>01/06/23</b>	DRAWN: <b>MT</b>	B.P.N: <b>DP-AD 44755</b>
CLIENTS: <b>LONGWOOD FOOTBALL NETBALL CLUB</b>		JOB REF: <b>22-77</b>	ISSUE: <b>E</b>	SHEET NO: <b>7</b>