



Longwood Community Plan 2010



Prepared by Noelker Consulting
Tel. 03 9852 8807/0417 583 134
neil@noelkerconsulting.com.au

Longwood Community Plan 2010

Table of Contents

1.0	Introduction.....	2
1.1	Longwood History	2
1.2	How does the Longwood Community Plan work?.....	2
1.3	Council's Support for Community Planning	4
1.4	What are the Key Principals of Longwood Community Planning?	4
1.5	Community Planning Group.....	5
2.0	Suggestions for the Longwood Community Plan	6
2.1	Suggestions for Events and Activities	7
2.2	Suggestions for Recreation, Sport and Leisure	8
2.3	Suggestions for Environment.....	9
2.4	Suggestions for Community Infrastructure.....	10
3.0	Function of Community Planning.....	11
3.1	Role of Community Planning Group	11
3.2	Alterations to the Community Plan	11
3.3	Dispute Resolution	11
3.4	Emergency Circumstances	11

Longwood Community Plan 2010

1.0 Introduction

The Longwood Community Plan represents the priority projects identified at the public meeting Thursday 18th March 2010 when the program was introduced as part of a Strathbogie Shire initiative to enhance the quality of life in Longwood.

1.1 Longwood History

Longwood is a town in northern Victoria, Australia. The town is located in the Shire of Strathbogie Local government area, 149 kilometres (93 mi) from the state capital, Melbourne. At the 2006 census, Longwood and the surrounding area had a population of 155.

The Post Office opened on 1 July 1852 and the office named Longwood Railway Station opened in 1881. Longwood was later renamed Longwood East and Longwood Railway Station was renamed to Longwood.

The town has an Australian Rules football team competing in the Benalla & District Football League.

There is one primary school, Longwood Primary School. It has a small student population but a large plantation area at the back where the students can build houses and explore the nature.

1.2 How does the Longwood Community Plan work?

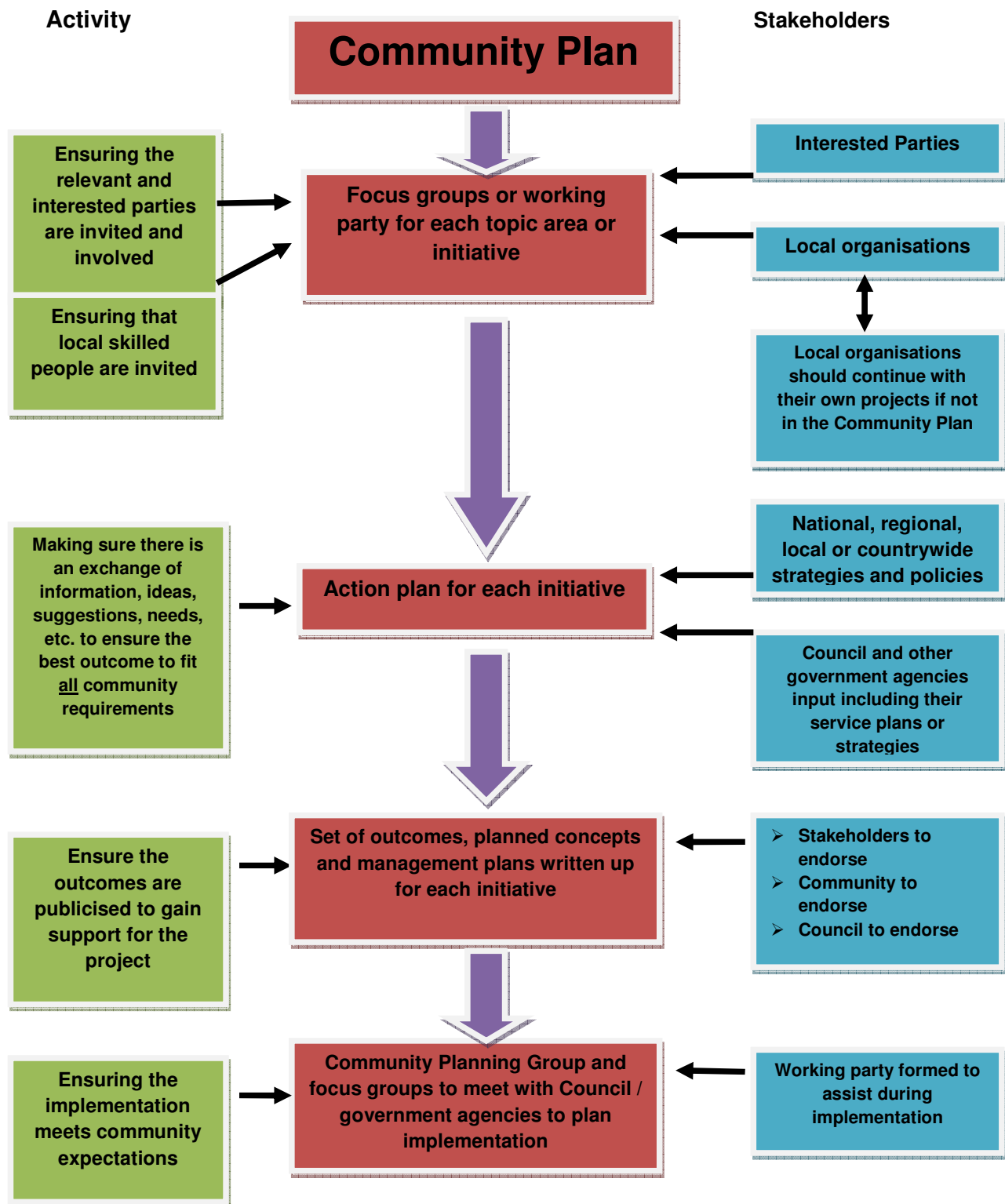
The process for managing and implementing the Community Plan is set out in the following table. The aim of Community Planning in this process is to ensure as many people as possible are involved and support the outcomes identified in the Longwood Community Plan.

In essence, the steps are:

- i. For a working party to be formed (if appropriate) for each topic area or activity that the community identifies as requiring significant attention.
- ii. Working party develops action brief for Community Planning Group for their information and input.
- iii. The working party ensures that they investigate research and develop a suggested set of actions that best suit the residents of the Longwood community.
- iv. The working party discusses the suggested actions with Council or their agencies seeking their support for implementation (which includes funds).
- v. Parties agree to actions including an Action Plan document, timeframe, funding, ownership, perpetuity, issues etc.
- vi. Actions initiated by parties as agreed.
- vii. Working party monitor and report progress to Community Planning Group (monthly or as appropriate).
- viii. Project implemented / completed.
- ix. To provide records in order to develop appropriate reports.

Longwood Community Plan 2010

This is further explained in the following:



Longwood Community Plan 2010

1.3 Council's Support for Community Planning

The Strathbogie Shire Council has commenced a Community Planning program to increase resident input through their local Community Plans in order to shape the individual needs of each community.

The benefits of a community preparing and supporting their local Community Plan, for the Strathbogie Shire Council are:

- To be able to provide improved facilities, services and initiatives that better reflect the community, and are more sensitive to the various stakeholders.
- To contribute to the quality of life issues that benefits each community.
- To identify services, facilities and activities needed in each community.
- To closely assist and monitor community needs and its changes.
- To advocate on behalf of the community to other government agencies for appropriate funding for initiatives needed and identified by communities.
- To identify the services in which Council has a role.
- To develop a better understanding of the needs of communities.
- To identify more appropriate strategies in response to the needs of communities.

1.4 What are the Key Principals of Longwood Community Planning?

At the centre of Community Planning is the opportunity to build partnerships between local groups and residents for each initiative that increase community participation and continuously improve community opportunity and services. The Community Plan will be most effectively delivered through cooperation and partnerships.

The principles behind the Longwood Community Plan are as follows:

- **Sustainability** – the community is seeking to improve its quality of life. All the outcomes of any actions must be able to be maintained into the future.
- **Consultation** – the community must ensure that its plans and ideas for each initiative is genuinely what local people want, and it fits into the foreseeable future needs of the Longwood Community.
- **Commitment** – the Longwood community in pursuing these goals must ensure that the outcomes are supported by direct community involvement and support, through either recognised and agreed paid resources or volunteer time.

1.5 Community Planning Group

The role of the Community Planning Group is to ensure focus groups are coordinated, and that the initiatives of the Community Plan are undertaken. The following residents make up this group:

- ***Max Cox (Chairman)***
- ***Ann Moore (Secretary / Treasurer)***
- ***Jane Maureen Robertson***
- ***Mick Tobias***
- ***Jenny Martin***
- ***Libby Seach***
- ***Ron Healy***
- ***Maurice Brodie***

2.0 Suggestions for the Longwood Community Plan

The development of the Community Plan has evolved through a series of meetings, public discussions, surveys and groups within the community. At all stages, residents have been encouraged to participate.

The following suggestions represent the initial views for each topic. The final outcomes or directions will require further research and development. This will ensure the final concept that is proposed for implementation, represents broad community approval.

By undertaking components of this Community Plan, it prepares the Longwood community to seek access to program funding. It also enables potential resource providers to acknowledge that the Community Plan represents a combined direction.

2.1 *Suggestions for Events and Activities*

Longwood has some stand out events but still needs to promote itself from the perspective of broader regional community interest in the Longwood community. The facilities in the community are first class and it has already established a reputation in carriage driving and associated events. The development of events is seen as a way in which the community can not only celebrate its success but also as a way that the community can raise funds for their community groups based on visitors to these events.

Community Suggestions:

Carried forward from last plan:

1. Promote Longwood – This ensures that the community continues to promote Longwood in a range of different ways as a place to live.
2. Website – This is the key mechanism for providing information about Longwood.

New suggestions:

3. Wood carving of trees at Community Centre – taking advantage of some old trees and whether there is a possibility that some wood carving could occur on those trees needs to be investigated.

Objectives:

- ✓ To consider ways in which the Longwood community can promote itself effectively
- ✓ Ensure that the community is involved in the events and activities that will effectively contribute to broader engagement and healthy activities
- ✓ Develop ways in which the Longwood community can support existing events and develop new events or activities

Key Actions Proposed:

1. To be determined at the next community planning meeting.
- 2.

2.2 *Suggestions for Recreation, Sport and Leisure*

Recreation, sport and leisure are a key activity within the Longwood community, as much as the community connectiveness relates to the community centre and recreation. The development of the recreation centre is therefore seen as a continued major issue for the future liveability of residents of the town and a source of pride for the community.

Community Suggestions:

Carried forward from last plan:

1. New netball courts – these need to be upgrade to meet the requirements of the Netball Association.

New suggestions:

2. Permanent water source for recreation – providing a permanent water source for the recreation reserve in order to encourage sport within the community centre, not only on the oval but for horse facilities etc.
3. All weather sand area for horse events – needs to be investigated as part of an overall development of the community centre and recreation reserve facility.

Objectives:

- ✓ To provide comprehensive facilities for recreation, sport and leisure in Longwood
- ✓ Encourage participation in and contribution to all recreation, sport and leisure activities by improving facilities and enhancing access
- ✓ Promote and encourage existing and new groups and organisations to develop their programs within recreation, sport and leisure

Key Actions Proposed:

1. To be determined at the next community planning meeting.
- 2.

2.3 Suggestions for Environment

The main aspect of environment concerns for the Longwood community relate to the creek through the town. At this stage, little has been done to the creek yet there are some aspects of the creek which are being polluted. Longwood is fortunate to be part of a broader environment group which tends to be the body responsible for broader aspects of the environment.

Community Suggestions:

Carried forward for last plan:

1. Improving and eradicating weeds from the creek area near Sandy Creek Bridge – this is a continuation of a partnership arrangement between Council, CMA and Vic Track.
2. Clean up Creek – Maxfield St Rail Line - this is a continuation of a partnership arrangement between Council, CMA and Vic Track.
3. Grey water system for Community Centre – the development of the grey water system can only improve facilities for the recreation centre and also may be a source of reuse of some water for the centre.

Objectives:

- ✓ Preserve the distinctive characteristics of the natural, heritage environment of Longwood & Community where possible
- ✓ Respect and support the development of community assets so that they can be utilised by the current generation and be available for similar enjoyment by future generations
- ✓ Manage appropriate spaces for vegetation and wildlife and encourage the community to participate in improving and maintaining these sites and allowing access to them
- ✓ Manage the local environment to ensure sustainable outcomes that complement both community and conservation objectives

Key Actions Proposed:

1. To be determined at next community planning meeting.
- 2.

2.4 *Suggestions for Community Infrastructure*

Community infrastructure is a major issue for the community planning group. The focus of community infrastructure has always been the community centre and the facilities within that reserve. Continued development of that reserve places a focus for the community. The second most important aspect is the Pub Paddock and the area around the main intersection and the memorial.

Community Suggestions:

Carried forward from last plan:

1. Improve power supply to district – this will be an ongoing problem for the community and needs to be retained in the community plan.
2. Longwood Hume Highway/Longwood Ruffy Rd intersection –This is an ongoing concern for the community and needs to be retained in the community plan.
3. Interpretive signs (history) for significant locations in Longwood – to develop information about the key items of historical interest in Longwood.
4. To place an advertising sign of Longwood events that complies within a paddock.

New suggestions:

5. Cover drain through Pub Paddock – Hull Street to Jean Street
6. Town entrance treatments
7. Continue landscape beautification in Longwood

Objectives:

- ✓ To improve community infrastructure as a way of attracting and retaining population
- ✓ Increase community safety
- ✓ Maintaining community infrastructure especially where it involves community meeting points as a key for community activity and integration
- ✓ Improve the facilities at public buildings and their ongoing utilisation and convenience

Key Actions Proposed:

1. Cover drain through Pub Paddock – Hull Street to Jean Street
2. Town entrance treatments
3. Continue landscape beautification in Longwood.

3.0 Function of Community Planning

3.1 Role of Community Planning Group

The role of the Community Planning Group is to support the actions only within the Community Plan.

This involves:

- Coordinating and bringing together all interested parties and the broader community to plan action for any initiative in the Community Plan.
- Supporting and assisting the development of project plans for each initiative to achieve implementation.
- Assisting the focus groups for each initiative to negotiate partners, funds and expertise to complete the project.

3.2 Alterations to the Community Plan

The Community Plan has been established through a public process and consequently this process must be respected. Any alteration to the Community Plan requires a public process. This allows the community to have an opportunity to consider any changes at the time and authorise any alterations to priorities as a result of that community meeting. The Community Plan is a vibrant, flexible and dynamic document. It can change, but change should occur through due process.

3.3 Dispute Resolution

In the event of a dispute all parties must meet, discuss and resolve the matter as soon as possible. If parties are unable to resolve the dispute, they must agree to hold a meeting in the presence of a person nominated through the Strathbogie Shire Council. The role of mediation is to guide the parties towards settling the dispute, not make the decision to resolve the dispute. In any dispute, all parties must be given a reasonable opportunity to be heard, to ensure natural justice is applied to the whole process.

3.4 Emergency Circumstances

It may be necessary from time to time for the Community Planning Group to suspend actions on the Community Plan because of an emergency that has occurred within the Community or region. The emergency must be of a significant community nature that requires broad community action as a priority above all other actions.